



# ALBINISM

ÁLVARO GARCÍA RAMÍREZ



# WHAT IS IT?

IT'S AN HETEROGENEOUS GENETIC DISORDER, CAUSED BY MUTATIONS IN DIFFERENT GENES, WHICH CREATES A REDUCTION OR TOTAL ABSENCE OF MELANIN (A DARK PIGMENT FOUND IN SOME CELLS THAT PROTECTS THE SKIN AGAINST SOLAR RADIATION) IN THE EYES, SKIN AND HAIR.

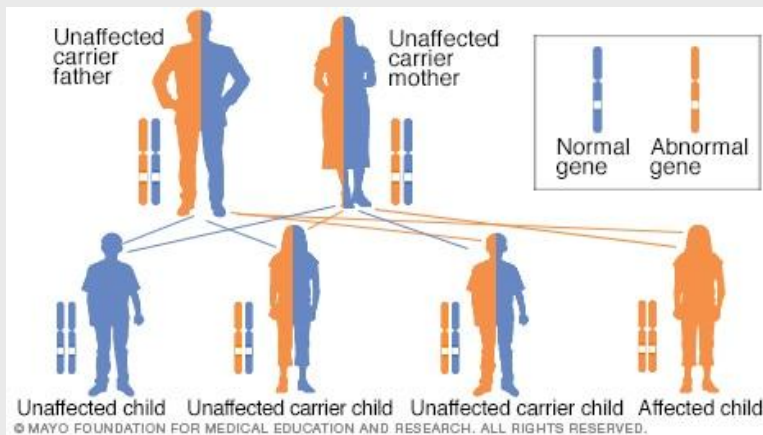
IT ALSO HAPPENED TO ANIMALS AND VEGETABLES.



IT HAS AN AUTOSOMAL RECESSIVE INHERITANCE PATTERN, WHICH MEANS THAT IF THE PARENTS HAVE THE GENE

- 25% OF THEIR CHILDREN WON'T RECEIVE IT
- 50% WILL BE CARRIERS BUT WON'T DEVELOP IT
- 25% WILL DEVELOP IT

HOW  
IS  
IT  
INHERITED?



# HOW DOES IT AFFECT?

THERE ARE DIFFERENT TYPES, RANGING FROM HAVING WHITE HAIR, FAIR SKIN AND TRANSLUCENT IRISES THAT DON'T CHANGE WITH GROWTH, TO WHITE HAIR THAT DARKENS WITH AGE, WHITE SKIN THAT DEVELOPS PIGMENTATION AND BLUE IRIS THAT CHANGES TO GRAY OR GREENISH.



HOW  
DOES  
IT  
AFFECT?

THERE IS ALSO AN OCULAR ALBINISM,  
WHICH IS MAINLY LIMITED TO THE EYES.

IT CAN ALSO REPRESENT VISION LOSS OF  
DIFFERENT TYPES, EITHER OF VISUAL  
ABILITY OR VISUAL PERCEPTION.




“

**NOW I HAVE INTERVIEWED THE TEACHER OF  
AN ALBIN STUDENT OF MY SCHOOL AND A  
WOMAN WHO HELP IT ONCE A WEEK.**



ONCE worker



A young man and a young woman are sitting on black metal chairs outdoors, facing each other. The man on the left is wearing a green hoodie with the word 'Noveda' printed on it and a white face mask. The woman on the right is wearing a white puffer jacket and a black face mask. They are positioned in front of a red brick wall. Above the wall, there are several potted plants on a ledge. A white downspout is visible on the wall to the right. The scene is brightly lit, suggesting daytime.

offering them the necessary resources to have access to all the educational content.

The image features three horizontal brush strokes in shades of purple and blue, creating a layered, artistic background. The top stroke is a dark blue-purple, the middle is a medium purple, and the bottom is a lighter, vibrant purple. In the center, the word "Teacher" is written in a white, cursive font. The text is enclosed within a white rectangular border that is slightly offset from the edges of the brush strokes.

Teacher





**THANKS!**

*I HOPE YOU LIKE IT!*